

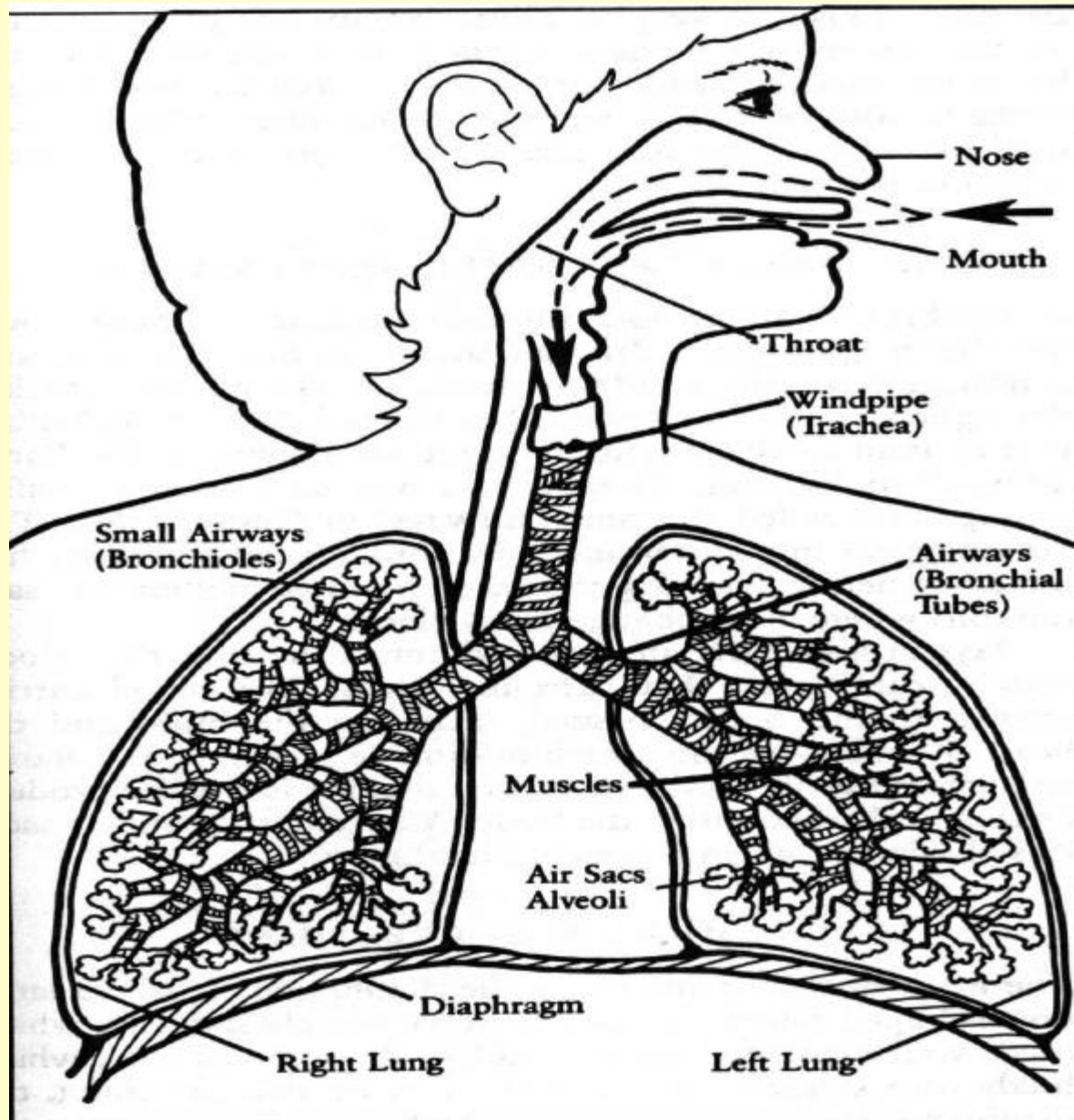
# Asthma In the Classroom

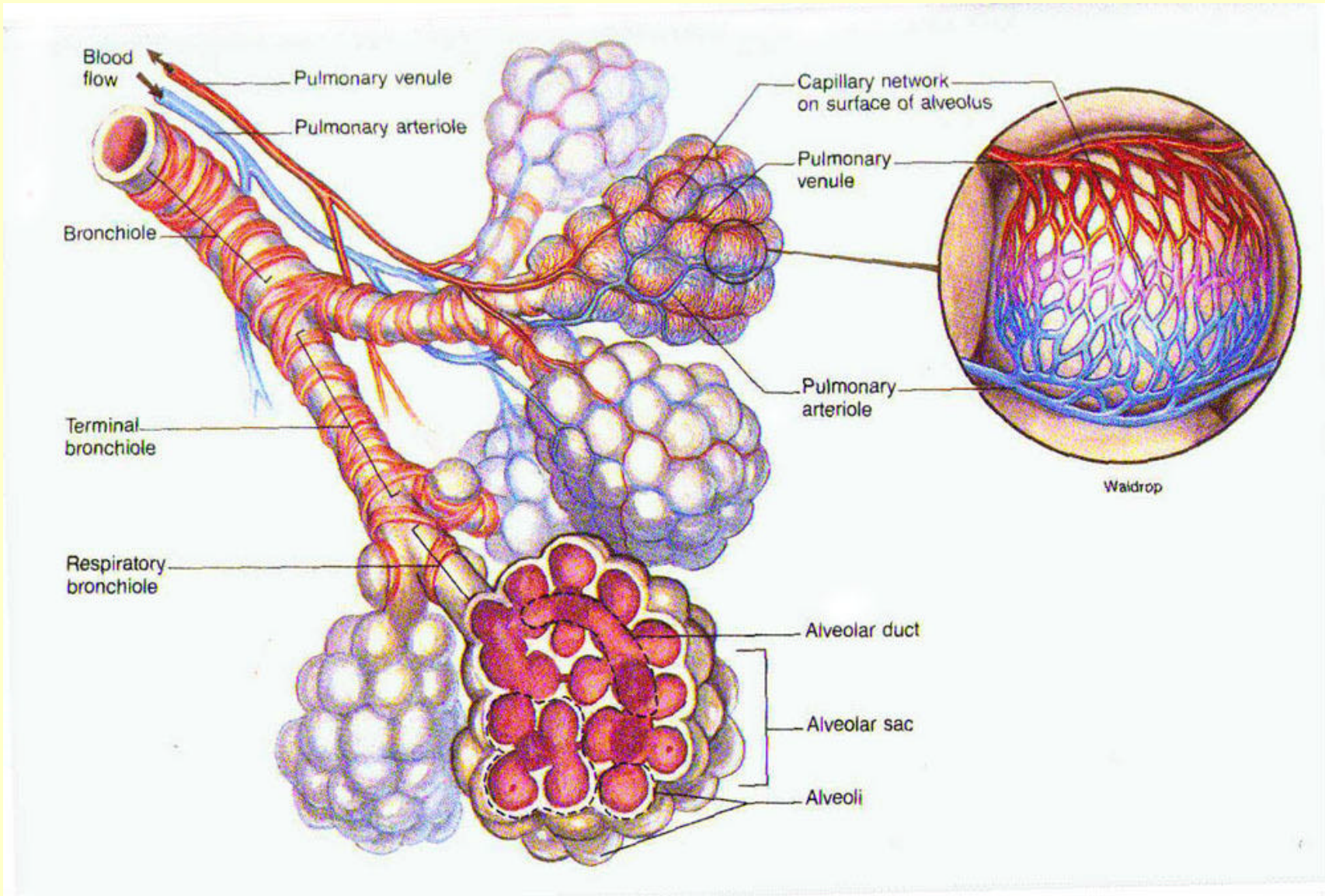
# Epidemiology

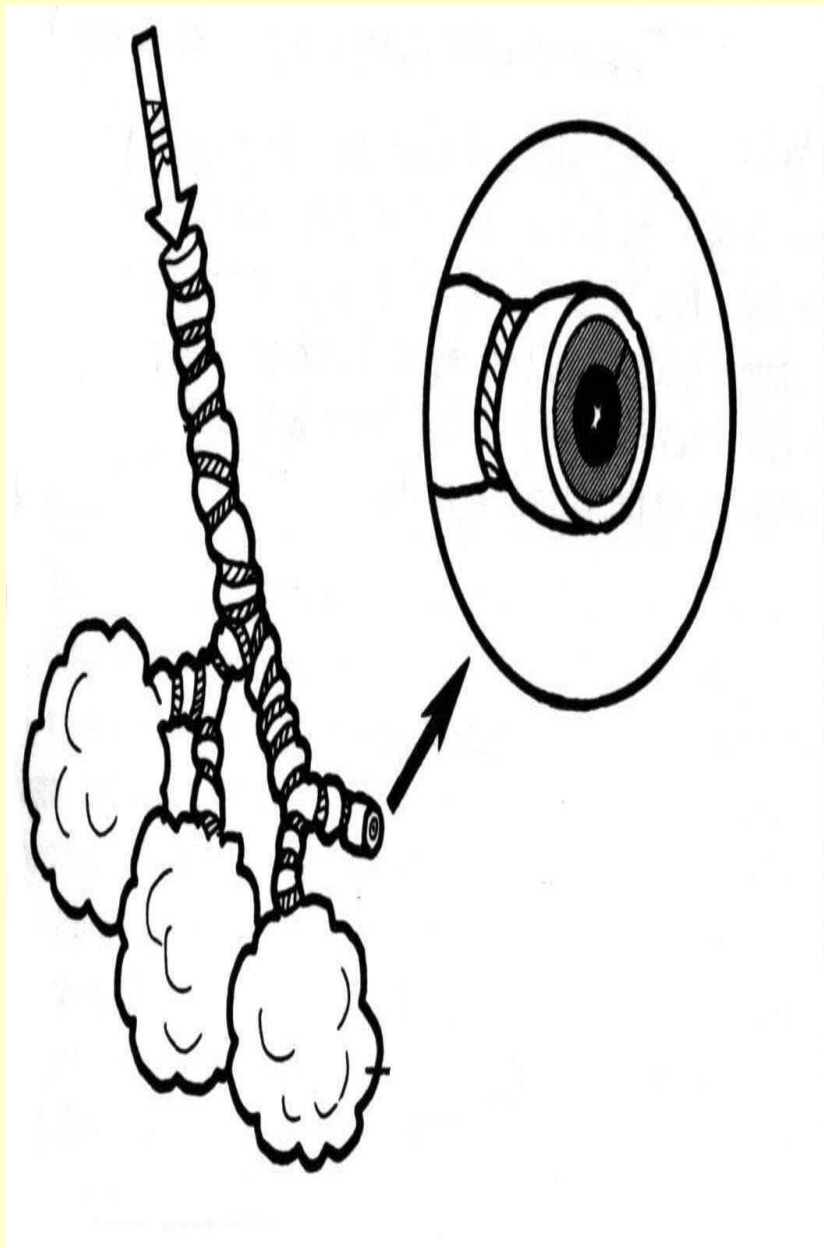
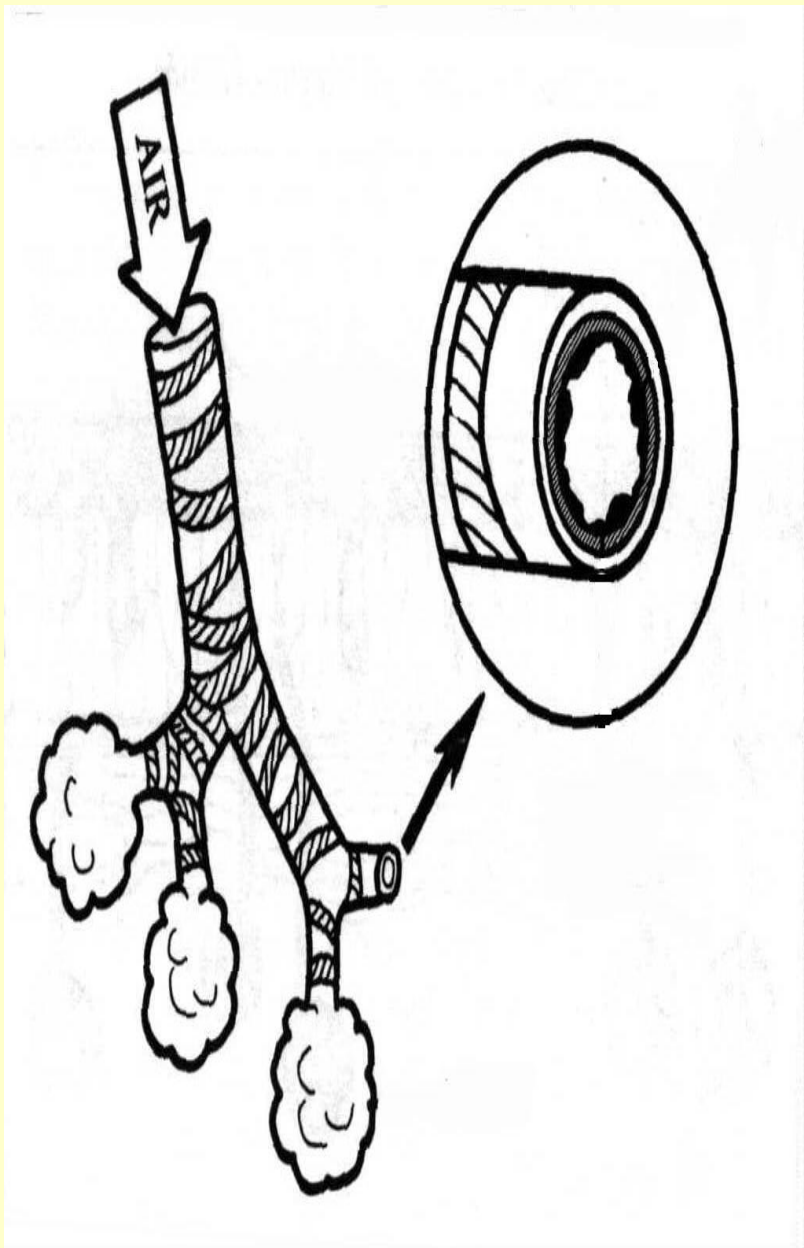
- Most common disease of childhood
- 10% have asthma
- Males > females
- Family history common

# Prevalence

- **Rapid rise all over the world**
- **1980—6.7 million people with asthma**
- **1998—17.3 million people with asthma**
- **Greatest increase: low income neighborhoods**







# Asthma Triggers

- **Respiratory or sinus infections**
- **Allergens**
- **Cold air and weather changes**
- **Emotional distress**
- **Known irritants and occupational chemicals**
- **Exercise**

# Signs and Symptoms

- **Cough**
- **Wheezing**
- **Shortness of breath**
- **Increased work of breathing**
- **Anxious**
- **Pale to cyanotic**

# Associated Symptoms

- **Poor appetite**
- **Irritability**
- **Poor sleep**
- **Restlessness**
- **Reduced tolerance for activity**
- **Vomiting**

# What You Need to Know:

- How long has child had asthma?
- How many times hospitalized or treated?
- Triggers?
- Early warning signs?
- Medications?
- Response to treatment?