

# Asthma In the Classroom

Child Care Training and Resource Kit - Asthma in the Classroom - Overheads

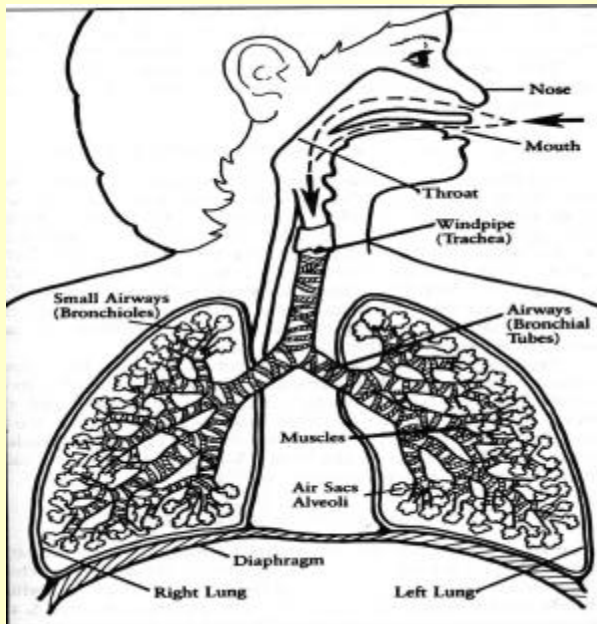
1

## Epidemiology

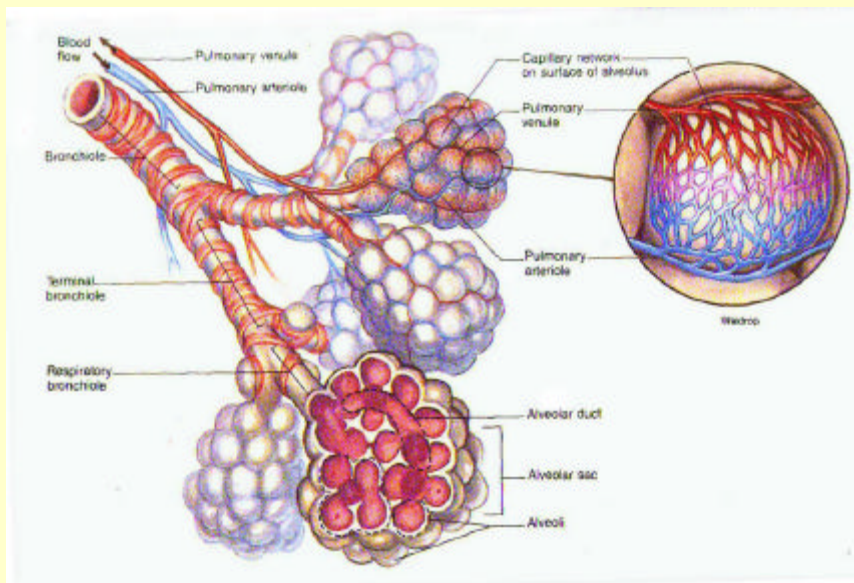
- Most common disease of childhood
- 10% have asthma
- Males > females
- Family history common

## Prevalence

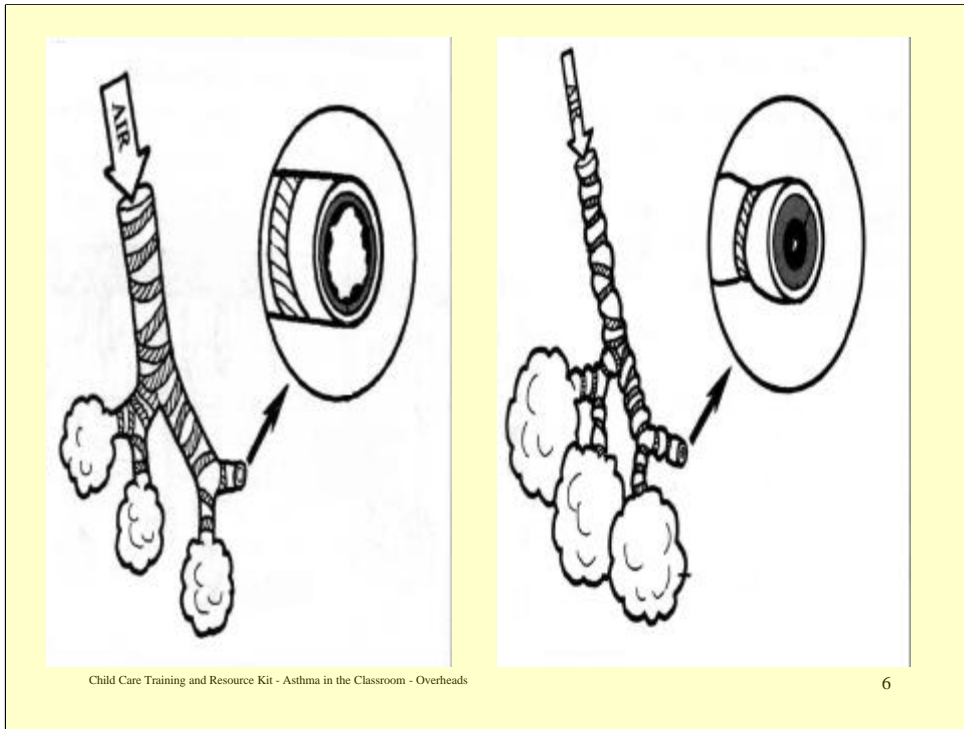
- **Rapid rise all over the world**
- **1980—6.7 million people with asthma**
- **1998—17.3 million people with asthma**
- **Greatest increase: low income neighborhoods**



Child Care Training and Resource Kit - Asthma in the Classroom - Overheads



Child Care Training and Resource Kit - Asthma in the Classroom - Overheads



The one on the left is a normal bronchiole. The one on the right is a bronchiole during an asthma attack.

## **Asthma Triggers**

- **Respiratory or sinus infections**
- **Allergens**
- **Cold air and weather changes**
- **Emotional distress**
- **Known irritants and occupational chemicals**
- **Exercise**

## **Signs and Symptoms**

- **Cough**
- **Wheezing**
- **Shortness of breath**
- **Increased work of breathing**
- **Anxious**
- **Pale to cyanotic**

## **Associated Symptoms**

- **Poor appetite**
- **Irritability**
- **Poor sleep**
- **Restlessness**
- **Reduced tolerance for activity**
- **Vomiting**

## **What You Need to Know:**

- **How long has child had asthma?**
- **How many times hospitalized or treated?**
- **Triggers?**
- **Early warning signs?**
- **Medications?**
- **Response to treatment?**